

HOUSE & GARDEN®

SEPTEMBER
1993
£2.20

INCORPORATING WINE & FOOD MAGAZINE

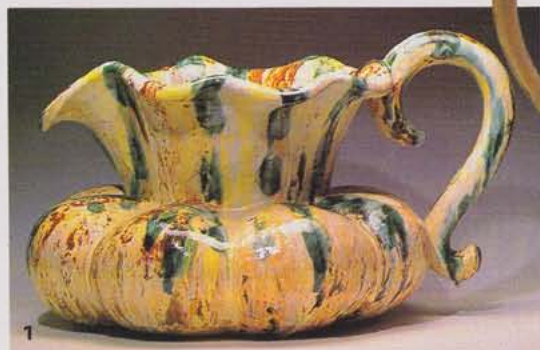
1995
INTERNATIONAL
MAGAZINE
OF THE YEAR

AT HOME:
Diane Keaton
Gayle Hunnicutt
Sally Burton

**LEITH'S
COOKERY
COURSE**

DESIGN SOLUTIONS
new series





1



2



3

BY HENRIETTA HOWARD

CERAMIC ART

A selection of pottery from the latest exhibitions displays the diversity of today's artists

1 *Mother-Pumpkin*, earthenware by Kate Malone, whose latest exhibition of ceramics, titled *Fruits of the Land*, runs from September 9 to 22 at The Orangery in Holland Park, off Kensington High Street, London W8. **2** On display until September 12 at the Royal Festival Hall Craft Shop and Gallery is *The Human Factor*, a show featuring the portrayal of the body in ceramics. The two main exhibitors are Christy Keeny and Nicola Tassie. Tassie depicts dancing and reclining nudes on hand-thrown jugs and bowls; *Spiral Dance*, slip and iron oxide with sgraffito, is seen here. The Craft Shop is on level 2 and opens from 12.30 to 7.30pm daily. **3** The Oxford Gallery, 25 High Street, Oxford, is exhibiting Anna Lambert's ceramics from August 9 to September 22. She lives in the north of England and her work, such as the earthenware *Oval Bowl with Hens in a Field*, (above) reflects her rural surroundings. **4** Stoneware *Cherubic Figure* by Miriam Escofet. All her work is designed for outdoors and has been fired to render it frostproof. Her varied output can be seen at Pulbrook & Gould, 127 Sloane Street, London SW1, and by appointment at her studio (tel: 081-708 5904). **5** *Madonna col Bambino*, hand built earthenware by Philip Eglin, whose work is the subject of a showcase exhibition at the Crafts Council Shop at the Victoria & Albert Museum from October 5 to 31. **6** Galerie Besson, 15 Royal Arcade, 28 Old Bond Street, London W1, which specializes in contemporary ceramics, will be holding a two-part exhibition of *Gallery Pots*. The first part runs until August 27 and the second from September 1 to 17. Included will be *Pale Pot*, *Tilted Rim*, *Speckled Haloed Bands* (right) in stoneware by Jennifer Lee. **7** *Tall Blue Bottle* and *Round Blue Bottle*, in porcelain, by Delan Cookson combine translucent colour with purity of form. His work can be seen with Marsden Fine Art at the 20th Century British Art Fair at the Royal College of Art from September 22 to 26 on Stand 40, and by appointment with Marsden Fine Art (tel: 081-6952700). The New Ashgate Gallery, Wagons Yard, Farnham, Surrey, will also include his work in a mixed show from September 21 to October 25 □



5



4



6

7